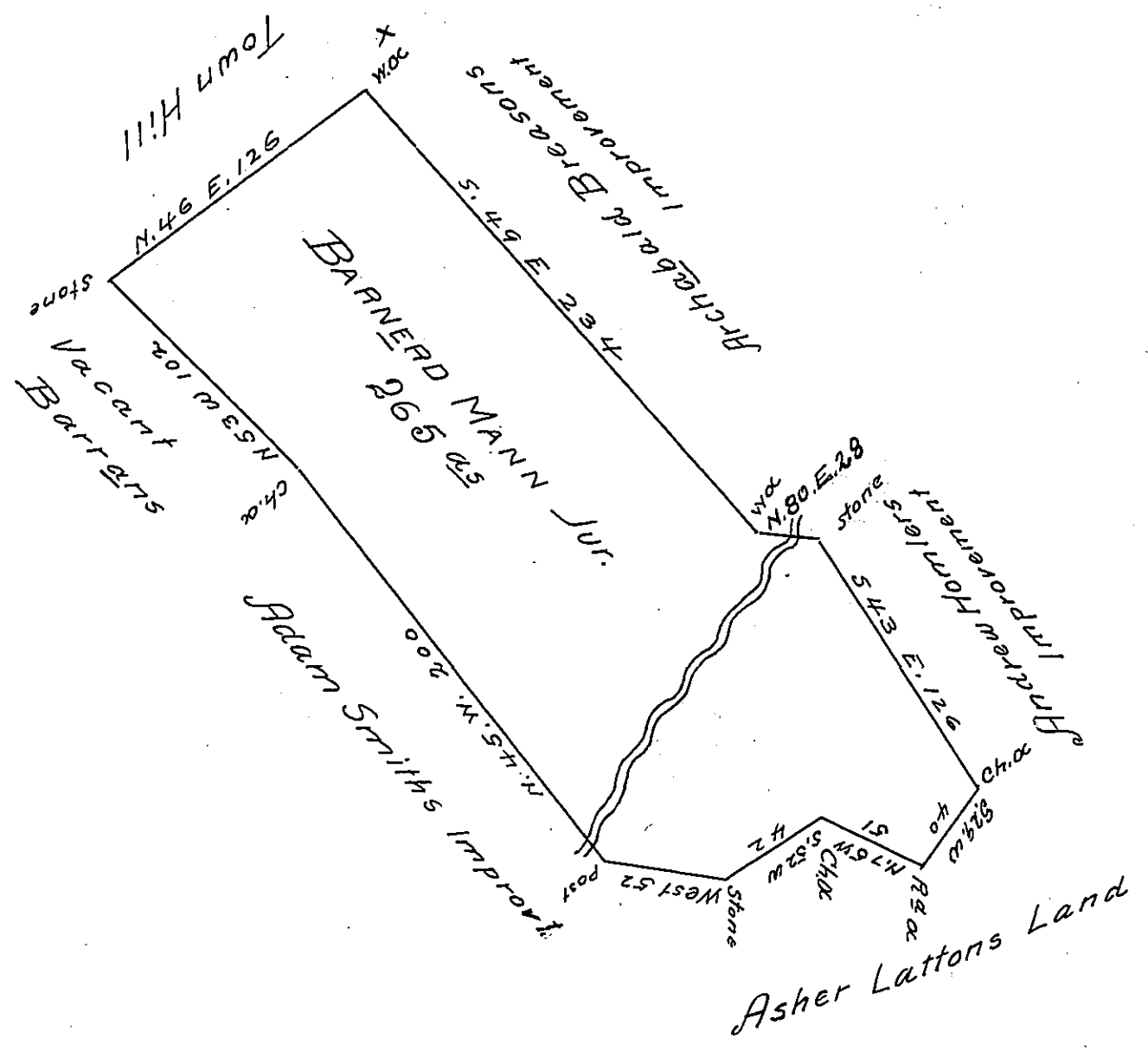


7



A Draught of a Tract of Land situate in Whipper Cove
Bethel Township Bedford County containing Two hundred
and sixty five acres and allowance.

Surveyed to Barnerd Mann Junor the 29th day of March
1787 in persuance of a Warrant granted said Mann
bearing date the fourth day of December 1786.

George Woods D.S

~~for George Woods Esqr D.S~~

John Luxens Esqr S.G!

~~Surveyor General~~

IN TESTIMONY that the above is a copy of the original remaining on file in
the Department of Internal Affairs of Pennsylvania, made
conformably to an Act of Assembly approved the 16th day of
February, 1833, I have hereunto set my Hand and caused
the Seal of said Department to be affixed at Harrisburg,
this eleventh day of December 1905

Loac P. [Signature]
Secretary of Internal Affairs.